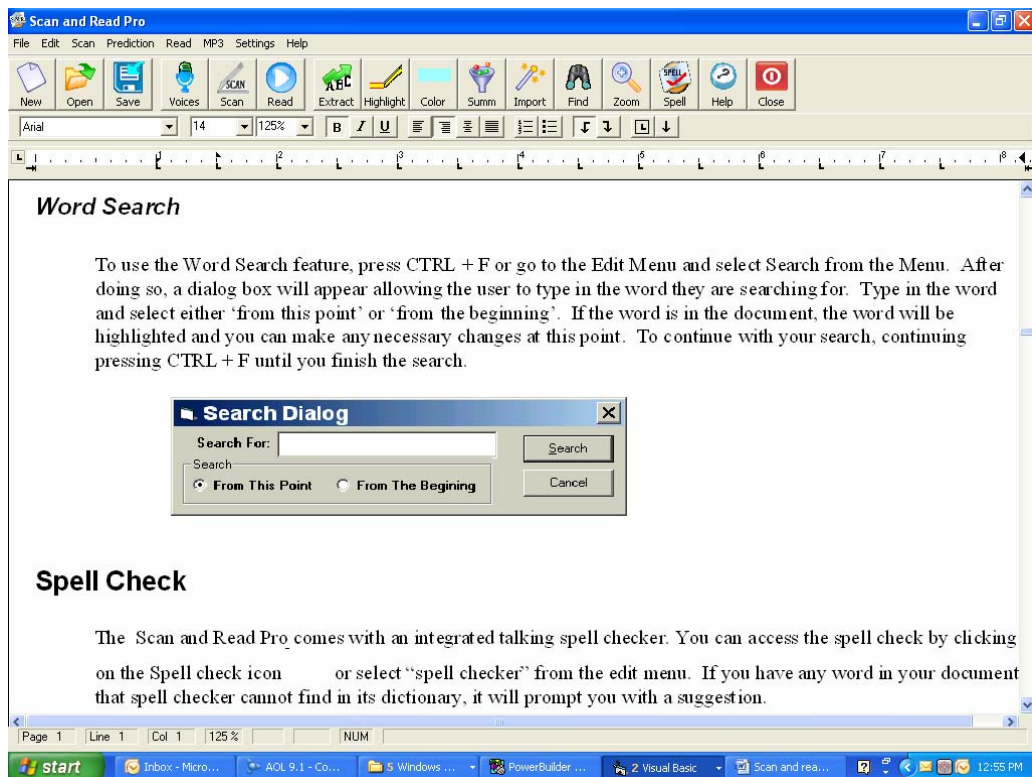

A Powerful, Easy-To-Use Reading Tool

Scan And Read Pro



By Premier Assistive Technology

Copyright

Copyright

©2002 Premier Assistive Technology, Inc.. All Rights Reserved. This documentation and the accompanying software are copyrighted materials. Making unauthorized copies of this material is prohibited by law. No part of the software or documentation may be reproduced, transmitted, transcribed, stored in a retrieval system or translated into any human or computer language without prior written permission of Premier Assistive Technology, Inc.. Premier Assistive Technology, Inc. asserts its "Moral Right" to be identified as the author of this work, in all jurisdictions which recognize the "Moral Right."

Notice

UNLESS OTHERWISE PROVIDED BY WRITTEN AGREEMENT WITH PREMIER ASSISTIVE TECHNOLOGY, INC., THIS PUBLICATION, AND THE SOFTWARE SOLD WITH THIS PUBLICATION ARE PROVIDED "AS IS" WITHOUT WARRANTY OF ANY KIND EITHER EXPRESSED OR IMPLIED, INCLUDING BUT NOT LIMITED TO THE IMPLIED WARRANTIES OF MERCHANTABILITY AND FIT THIS PARTICULAR PURPOSE. THE ENTIRE RISK ARISING OUT OF THE USE OR PERFORMANCE OF THIS PUBLICATION AND SOFTWARE REMAINS WITH YOU, THE USER. IN NO EVENT SHALL PREMIER ASSISTIVE TECHNOLOGY, INC., OR ANY OF ITS SUPPLIERS, BE LIABLE FOR ANY LOST PROFITS, LOST SAVINGS, DIRECT, INCIDENTAL OR INDIRECT DAMAGES OR OTHER ECONOMIC OR CONSEQUENTIAL DAMAGES, EVEN IF PREMIER ASSISTIVE TECHNOLOGY, INC., OR ITS SUPPLIERS, HAVE BEEN ADVISED OF THE POSSIBILITY OF SUCH DAMAGES. PREMIER ASSISTIVE TECHNOLOGY, INC. RESERVES THE RIGHT TO MODIFY THIS DOCUMENT AT ANY TIME WITHOUT OBLIGATION TO NOTIFY ANYONE. IN NO EVENT SHALL PREMIER ASSISTIVE TECHNOLOGY, INC. OR ITS SUPPLIERS' LIABILITY UNDER THIS AGREEMENT EXCEED THE SUM OF ANY AMOUNTS PAID HEREUNDER BY THE CUSTOMER TO PREMIER ASSISTIVE TECHNOLOGY, INC. OR THE SUPPLIER.

Trademarks

These other marks include, but are not necessarily limited to: WINDOWS, WINDOWS 95, WINDOWS 98, WINDOWS NT, and WINDOWS 2000, Windows Me, Window XP, Windows Vista which are registered Trademarks of Microsoft Corporation. WinZip is a registered trademark of WinZip Computing, Inc. PKZIP is a registered trademark of PKWARE, Inc.

You shall not use any of the Trademarks, or Service marks of Premier Assistive Technology, Inc., or Microsoft Corporation, or any other entity, without the express written permission of such Trademark or Service mark owner.

Deletion or Modification

If any portion of this Manual, including but not limited to the "Notice" section above, is held to be unenforceable, then that portion shall be deleted, and the remaining language shall be given its broadest legal effect.

Premier Assistive Technology, Inc.

1309 N. William St.

Joliet, IL 60435

Phone: 815-927-7290 Fax: 815-722-8802

E-mail: info@readingmadeeasy.com

Web: www.readingmadeeasy.com

Table of Contents

Copyright	2
About Scan and Read Professional.....	7
How does it Work?	7
Scan and Read Pro - The Program.....	8
Installing Scan And Read Pro.....	9
Windows XP Home and XP Professional, Vista	9
System Requirements.....	9
Short Cut Key List	10
File Menu	11
New Document	11
Opening a Document	11
Saving a Document.....	12
Printing.....	12
Exit.....	13
Edit Menu	13
Highlight	13
Highlight Colors.....	14
Clear Highlights	14
Extract	14
Search.....	14
Lookup Word.....	15
Spell Check.....	15
Thesaurus	16
Scan Menu	17
Scanning.....	17
Scanner Options.....	19
Scanning.....	20
Clear Scans.....	21
Previewing The Scanned Page.....	21
Processing Your Work	21
Inserting the Scanned Information.....	22
Closing without processing.....	22
PDF Import Wizard.....	22
Reset OCR	26
Reading a Document.....	26
Read	26
Stop Reading.....	26
Read Selected Text Only	27
Read line by line	27
Summarize	27
Creating a Summary of you document.....	27

How to summarize a document.....	27
Place Summary into a separate document.	29
Highlight Summary in the original document.	29
Adjusting the summary size.....	29
Key Echo.....	30
Word Repeat	30
Reading Options	30
Screen Settings.....	32
Changing Screen Colors	32
Zoom Factor.....	32
Place all documents here.....	32
Tracking And Highlighting.....	33
Highlighting	33
Highlight By Word	34
Highlight by Sentence and Word.....	34
Highlight by Paragraph And Word.....	34
Identifying Word Being Read.....	35
Change Word Color	35
Word Pause	35
Word Pause Setup.....	35
Word View Tab.....	35
Word View Settings.....	36
Show Word View.....	37
Create Audio Window	37
MP3 Create	37
Selecting a voice	38
Rate	38
Pitch	38
File Name.....	38
File Type	39
MP3 Options	39
Creating a File.....	39
Settings Menu	40
Line Spacing	40
Word Spacing.....	40
Page Display	41
Normal View.....	41
Page View	41
Voices	42
Zoom.....	43
Reset Defaults	43
Default Voice	43
Help.....	44
Load User Manual.....	44

Hot Key List.....	44
Help About.....	44
Word Prediction	46
Configuring your word prediction	46
Word List font size.....	46
Libraries	46
Modifying the Libraries	47
Show Modified Words Only.....	48
Commonly Misspelled words.	48
Display List After	48
Saving Your Word Prediction Settings.....	48
Adding a word to the library.....	50
Removing a word from a Library.	52
Using Word prediction	52
Turning Word Prediction on or off.	52
How do I use word prediction.....	54
Selecting a Word from the word list.....	55
How to get the right word every time	55
Find the definition of a word any time just by double clicking the word. ...	56
Appendix A System Requirements.....	57

About Scan and Read Professional

Scan and Read is a reading package that bridges the gap between the physical world and the electronic world. Scan and Read will allow you to read virtually any printed material. It will take documents placed on the scanner or from your computer, open them up and read them to you. It highlights a word as it reads to you, allowing you follow along both visually and while you listen. The voice and reading speed (rate) are adjustable, so it can be fine tuned to your liking.

Scan and Read is primarily a reading package, but it can also be used as a word processor. You can highlight, edit, cut, copy and paste into it. Scan and Read allows you to read continuously from beginning to end of a document or, if you want, you can read one word at a time, or even spell a word out by reading a character at a time.

How does it Work?

Scan and Read is known for it's easy-to-use interface. How does it work? Simply place some printed material on the scanner and press the F5 key or click



on the scanner icon. The scanner will take a picture of what you have placed on the scanner and bring it into the computer. Once the picture is in the computer, Scan and Read will determine the position you placed the paper on the scanner. Scan and Read does not care how positioned the document when you placed it on a document on a scanner. You can place it sideways, upside down or even crooked and Scan and Read will figure it out.

Once Scan and Read has determined how you have placed it on the scanner, it will now grab the text from the scanned image. This is called OCR or "Optical Character Recognition". Now Scan and Read will place the text it collected into the view area of the screen. This area is a word processor and you can perform full word processing on the text once it is in this window.

Scan and Read will tell you once it's done scanning. When you hear "Document Done" you will know that you can start reading now. To do this press, the F6 key



or click on the read icon. Scan and Read will continue to read until you tell it to stop. You do this by pressing the F7 key or clicking on the stop icon.

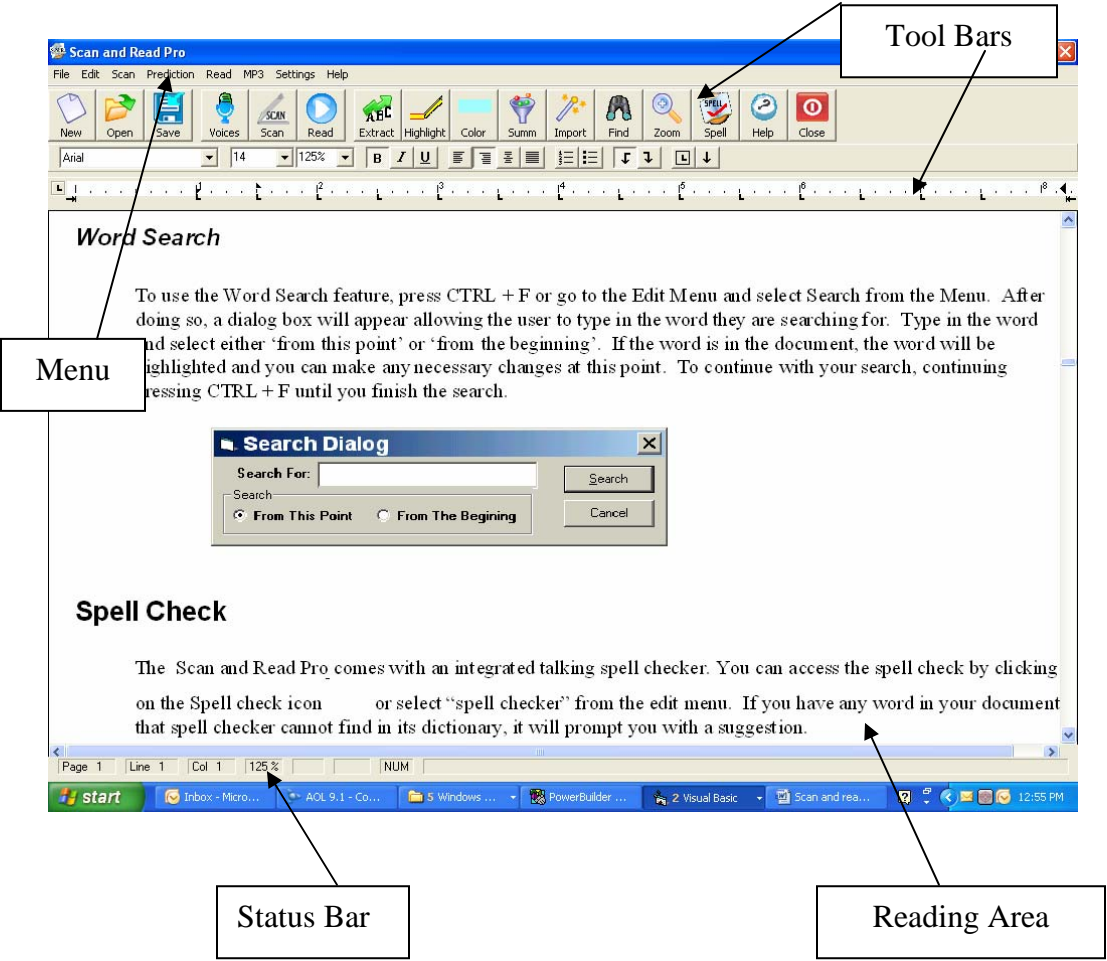


Once you have adjusted the settings for the program to your particular preferences, in the future, the only thing you have to do is press the F5 key to scan, F6 key to read and the F7 to stop reading (or press the corresponding icons / buttons for those functions). That is all you have to do. You will be up and running with Scan and Read in just a few minutes.

It is important to note that Scan and Read will work with **any** USB scanner. Effectively, Scan and Read will work with any new scanner built today. It also works with the new multi-function “all in one” units. The current trend for printer manufacturers is to build units that can copy, scan, fax and print. Scan and Read will work with these as well.

Scan and Read Pro - The Program

Scan and Read has a very simple easy-to-use interface. The tool bar contains large icons with pictures and captions. The editing or formatting bar contains icons that are standard and customarily used in the industry.



Installing Scan And Read Pro

Windows XP Home and XP Professional, Vista

The installation of Scan and Read will take about 5 minutes for today's average PC. To install Scan and Read, you will need the minimum system requirements. Refer to "See System Requirements" in this section of the manual. To install Scan and Read, follow these steps.

1. Place your CD in the CD ROM drive.
2. The CD is "auto loading", so a setup screen should automatically be displayed. If this screen does not display, go to your CD ROM drive and run program call "SETUP.EXE". The setup program will prompt you for input several times during the install process depending on your operating system.
3. Scan and Read will create a program group call "Scan and Read Pro" which will be located in your program list.

System Requirements

CPU:	900 MHz Pentium or Faster
Memory:	256 MB
Disk space:	400 MB
CD ROM:	4X or Faster
Keyboard:	104-key Standard Keyboard
Mouse:	Standard Mouse
Speakers:	Standard Speakers
Sound Card:	Any Windows Compatible Sound card
Scanner:	Any TWAIN compliant, USB compatible scanner

Short Cut Key List

To Scan	Press the F5 Key
To Read	Press the F6 Key
To Stop Reading	Press the F7 Key
To Read Selected Text Only	Press the F8 Key
To Change Voices	Press the F12 Key
To Read the Next Word	Press CTRL + the Right Arrow
To Read the Previous Word	Press CTRL + the Left Arrow
To Read One Line at a time	Press the Up or Down Arrows
To Spell out a word	Press the Left or Right Arrow
To Create a New Document	Press CTRL+N
To Open a Document	Press CTRL+O

File Menu

Under the file menu you will see a list of menu options that are used to manipulate files under this menu you will see menu options new, open, save and print a document. You will also find a way to close Scan and Read.

New Document

To create a new document, press CTRL + N or go to the File menu and select New. New will clear the screen of any text. If you want to save the information on the screen, you must save the information prior to selecting New. You must “scan” or “open” to bring in a new document.

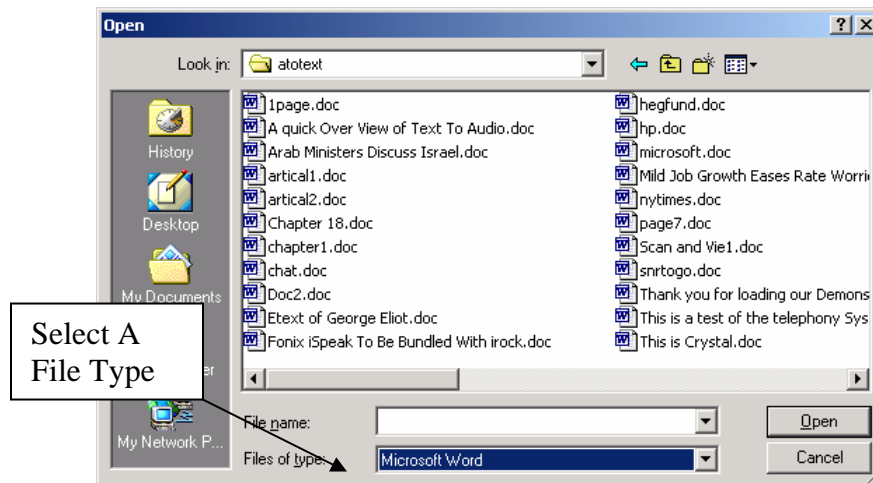
Opening a Document

There are two types of documents that you can open. It depends on which view you are in. If you are in the Image view, the system will prompt you to open an image. If you are in the word processing view, you will be able to open a word processing document. See Switching View for more detail about changing between image and word processing views.

Opening a document: To open a document, press CTRL+O, or click on the Open



button. The Open Dialog Box will appear.



The dialog box functions the same as any Microsoft Windows Dialog Box. You can select where you want to look, or select the file type or file name. Scan & Read can save in the following formats: Microsoft Word 97, Standard Text Files, HTML Documents, and Rich Text Format.

Once you have found the file that you want to open, press the Enter key. The document will be opened and displayed in the word processing window.

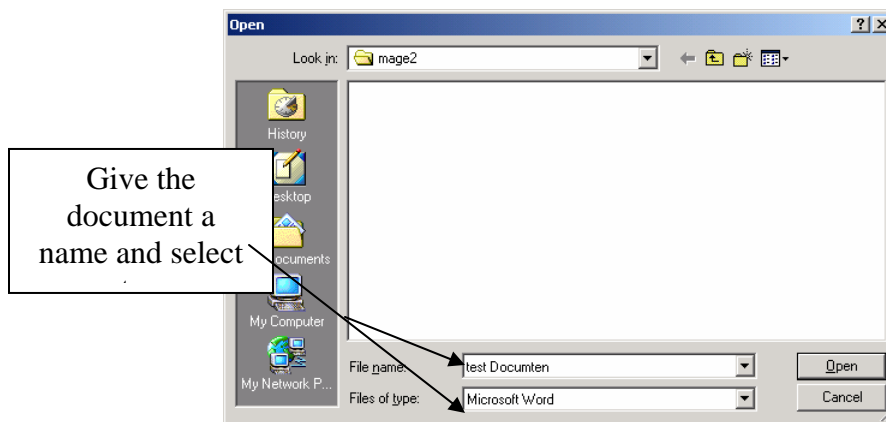
Saving a Document

There are two ways to save a document, you can use Save and Save As. If you have opened an existing document you can use the Save feature. You will not be prompted for a file name. If you have not given the document a name yet, when you try to save the file, it will prompt you for a file name and type.

To save an existing document, press CTRL+ S, select Save from file menu, or



click on the save button. If you select save from the file menu or if you click on the save button the Save dialog box will open



If you want to save the document as a different name or different file type, select the Save As feature. Once the Save As dialog box opens, enter a new file name or select a different file type.

Printing

The printing feature only works with the word processor. To print a document, press CTRL+P. It will print the document, which is opened in the word processor window.

For mouse users: select the File menu by clicking on it with you're left mouse button and then select Print from the dropdown list with your left button.

Exit

There are two ways to exit the application. The easiest way is to press ALT+F4. This will close the application. If the information displayed on the screen has not been saved first, it will be lost. You can also exit the application by selecting the file menu and then select Exit from the menu.

Edit Menu

The Edit menu only effects the word processor view. The edit menu provides you with common word processing tools. It allows you to cut, copy, or paste text within the word processing window or search for a specific word.

Cut: To cut text from the word processor, select / highlight the desired text you want to cut and then select Cut from the edit menu. You can also use the standard window command of CTRL+X.

Copy: To copy text from the word processor, select / highlight the desired text you want to copy and then select Copy from the Edit menu. You can also use the standard windows command of CTRL+C.

Paste: To paste text into the word processor, place the cursor where you want to paste the text and then select paste from the menu. You can also use the standard windows command of CTRL+V

Highlight

Scan and Read has a built in highlighter. When you press CTRL-H or click on

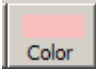


the Highlight icon. Whatever text you have selected will be highlighted. This is a nice feature if you are studying and need to highlight important parts of a document. There are multiple highlight colors to pick from.

Highlight Colors

Scan and Read has 4 different highlight colors to pick from: Yellow, Green, Pink and Blue. The color that has the check mark next to it is the current default. Once you have set the default color, it will remain the default color until the next time you change it.

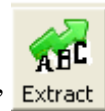
You can also change the highlight color by clicking on the color icon on the tool

bar . Every time you click on the highlight color button it changes. The color displayed is the color that will be used with the next highlight.

Clear Highlights

If you want to remove the highlights you have added, you must first select the area that you want to remove the highlights and then go to the edit menu and select clear highlights. This will only remove the highlights from the selected area. When you clear the highlights it sets the background color to white.

Extract

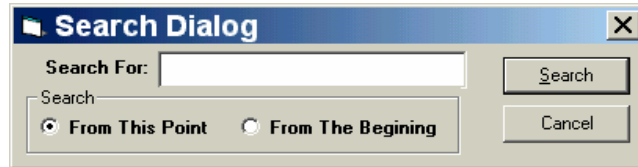


The powerful feature of “Highlight Extraction” will search through your document and find all the highlighted information and extract it into a new document. You can extract all of the highlighted colors or just one. This new document can be saved or read. The extraction process retains all formatting, fonts and even pictures! For more information on highlight extraction, see the Extracting Highlights later in this manual.

Search

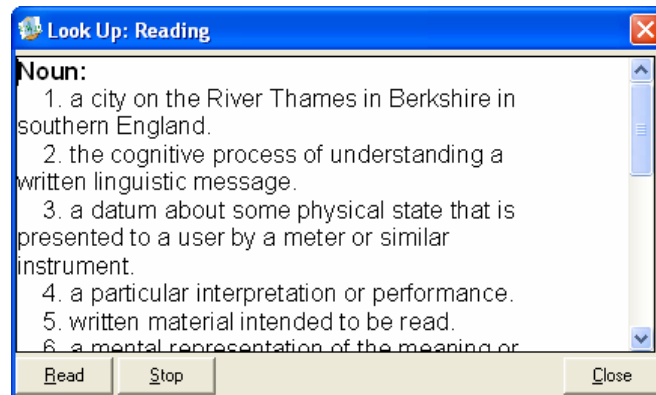
To use the Search feature, press CTRL + F or go to the Edit Menu and select Search from the Menu. After doing so, a dialog box will appear allowing the user to type in the word they are searching for. Type in the word and select either ‘from this point’ or ‘from the beginning’. If the word is in the document, the word will be highlighted and you can make any necessary changes at this point.

To continue with your search, continuing pressing CTRL + F until you finish the search.



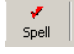
Lookup Word

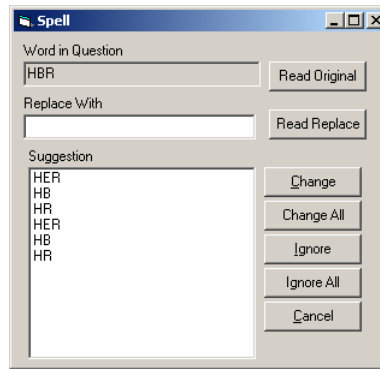
Scan and Read Pro has built in dictionary. You can look a word any time simply by double clicking the word you wish to look up, or you can highlight the word and press CTRL+L.



This will open up the definition window which you can then have read to you by clicking on the read button.

Spell Check

Scan and Read Pro comes with an integrated talking spell checker. You can access the spell check by clicking on the Spell check icon  or select “spell checker” from the edit menu. If you have any word in your document that spell checker cannot find in its dictionary, it will prompt you with a suggestion.



If you want to hear any word in the list, all you need to do is highlight it and it will read the word back to you.

Word In Question: The “word in question” is the word that the spell checker found in the document that it did not recognize. To have the computer read the word to you, select the Read Original button.

Replace With: Anything typed in the “Replace With” edit box will be used to replace the “word in question”. When you select a word from the list, it will appear in the “Replace With” edit box. To hear what you have typed or selected, click on the Read Replace button.

Change: When you select the Change button, the word in question will be replaced with the text that has been entered in the “Replace With” edit box. It will only replace the highlighted word in the document.

Change All: The change all button will replace all occurrences of the word in question with whatever is placed in the “Replace With” edit box.

Ignore: When you select ignore, it will not replace the word in question. It will only skip that occurrence of the word.

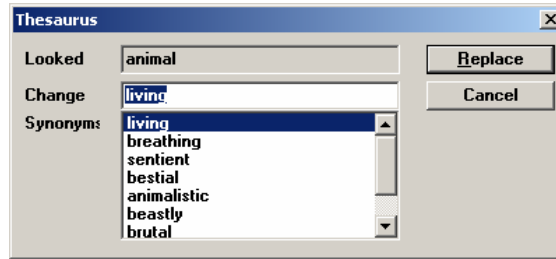
Ignore All: The “Ignore All” command will ignore all the occurrences of the word in question and will not prompt you each time it finds it.

Cancel: This will Cancel the spell checking of the document.

Thesaurus

The Scan And Read Pro comes with its own thesaurus. To use it, simply highlight the word that you want to find a synonym for and the select Thesaurus

from the edit menu. It will then open up a dialog box and list the highlighted word in the “Looked” field.



To the right of the Looked field is the Replace field. Whatever is in the Change field will replace the originally highlighted word in the source document if you select Replace. The synonym list will display all the possible words that could be used to replace the original. If you find a word you want to use, simply highlight it and click on the Replace button.

Scan Menu

The scan menu contains all the feature needed to acquire an image from the scanner. You can also import an image that has already been scanned, or import a PDF file directly into Scan and Read Por

Scanning

The Scanning Feature in scan and read will work with any TWAIN compatible scanner, including the print, copy, fax, and scan multifunction units. This utility is a very fast method to acquire documents which only exist in the physical world. To start the scanning utility, simply open Scan and Read Pro and then select the



“SCAN” button. This will start the scan utility. The scan utility will accept whatever the user places directly on the scanner, and then transfer it directly into a Scan and Read.



There are several things the user will need to verify before scanning is started. First, verify the desired document to be scanned is actually on the scanner. Once the document is positioned on the scanner, the user should verify the image source. Lastly, the source should be set to the particular scanner being used.

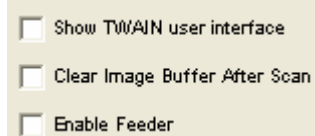
By default, the “MANUAL SELECT” is set. Adjacent to the Manual Select, the user will see a dropdown list of all the image devices on the computer. An image device can be a digital camera, webcam, or scanner. Windows does not distinguish between the various image devices, and simply lists all available devices. From the dropdown list, verify the device the user wishes to use, is also the same device listed in box. If a device is not listed, go to the scanner manufacturer’s website, download and install the TWAIN drivers for the unit. Once the user sets the default device, the next time the scan utility is opened, it will default back to the last device used.

Pixel Type: The pixel type should always remain on the true color. It’s recommended, the only occasion the true color should be changed, is when the color mode is very slow.

DOTS PER INCH: Or more commonly referred to as “DPI”. The scanner utility defaults to 300 DPI. The 300 DPI is the optimal resolution for PDF Equalizer and PDF Magic. When using a smaller than 300 DPI, the quality of the scans will not be detailed enough to be read by the software. A larger resolution does not always improve accuracy, but it can enhance the output for less than good quality original documents.

Scanner Options

There are four scanner options allowing the user to control the scan process: Show TWAIN interface, Clear Image Buffer After Scan, Enable Feeder, and Enable Duplex.



Show TWAIN User Interface: Each scanner comes with its own interface. This is typically different for all scanners. If this option is enabled when scanning, the interface provided by the manufacture will be used. Since each manufacturer and model is slightly different, the Scan utility provides a unified interface for all devices.

Clear Image Buffer After Every Scan: When a document is scanned, the scanner will take a picture of what is on the scanner and then hold it in memory, until the user saves the document. This enables the user to preview the image and make any necessary changes before it’s saved. But, if this option is not checked, the image in the buffer will not be saved immediately. Use this option if the computer has a limited amount of ram.

Enable Feeder: The enable feeder is an option that enables the ADF of the scanner. If the user checks this option, and the scanner does not have an ADF, it will be ignored. If the user places a document or object in the ADF, but does not have this option checked, your scanner may ignore the ADF as well. Most scanners will use the ADF regardless whether this option is checked or not, even if a document is placed in the ADF.

Scanning

Once the user has made all the necessary setting changes, he/she is ready to scan. Simply place the desired document on the scanner and click the “SCAN” button



A scanning progress bar will start in a few seconds.



As the images are acquired, they will be displayed in the view window. Each scan is placed right after another in order. Once scanning is completed, the user can navigate page by page to preview the scans before they are saved. Any undesired scans can be deleted before they are saved to a file. Once the user has previewed the file, they are ready to be saved.

Clear Scans

Common errors often occur, such as pages being placed askew on the scanner.



When this occurs, simply use the “CLEAR SCANS” button. Use this option for multiple scans. If the user has an ADF and wants to scan one side of the document and then the other side, select “CLEAR SCANS”, and then scan the other side of the document into a separate file.

Previewing The Scanned Page

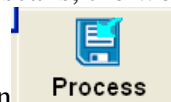
The scanning utility enables you to preview the scans before they are processed. The buttons at the bottom of the window let you navigate from page to page.



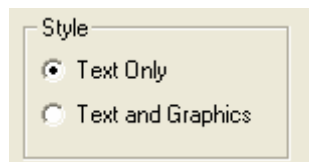
And if you get to a page you want to remove just click on the button labeled “Delete Current Page.” This will remove the image allowing you to rescan it. Scan and Read Pro does not care if a pages is scanned in upside down or sideways it will figure it out and when it is processed it will correct it.

Processing Your Work

Once the user has completed all necessary scans, the work must be processed. To



process your work select the process button on the scanner utility screen. This will process the images and convert them to text. There are two options to chose from when processing the images. One option will provide you with just plain text, and the other is text with images.

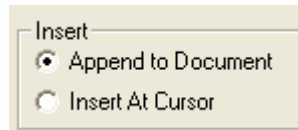


It is important to note that Scan and Read will put the text in continous reading format. That means that if you have a page with two columns it will convert the columns into a single column by placing the right column underneath the left

column so that when Scan and Read Reads it will read everything in the right order and you will not have to tell it what to read. If you need the text to remain in exactly the original format you will want to use the Scan option in PDF Equalizer. PDF Equalizer will keep the page exactly the same as the original.

Inserting the Scanned Information

There are two ways to insert the scanned document. You can append to the existing document, which is the default, or you can insert at the cursor location.



Append to Document: This is the default setting. When this option is selected every page you process will be appended to the end of the document.

Insert At Cursor: Use the insert at cursor to insert the scanned text where your cursor is currently located. This can be very useful if you missed a page and want to scan it into a specific location in a document.

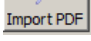
Closing without processing

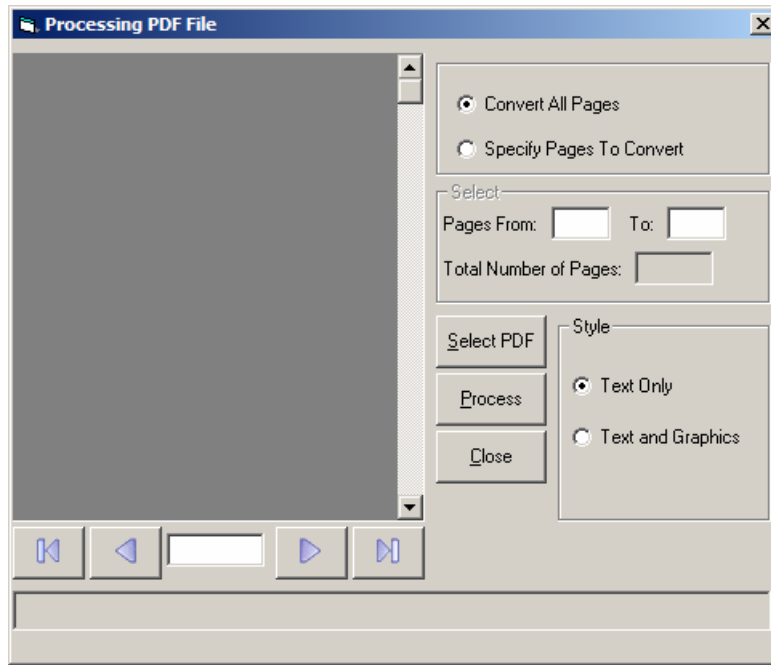


Select the close button if you wish to close the scan utility without saving the scanned image.

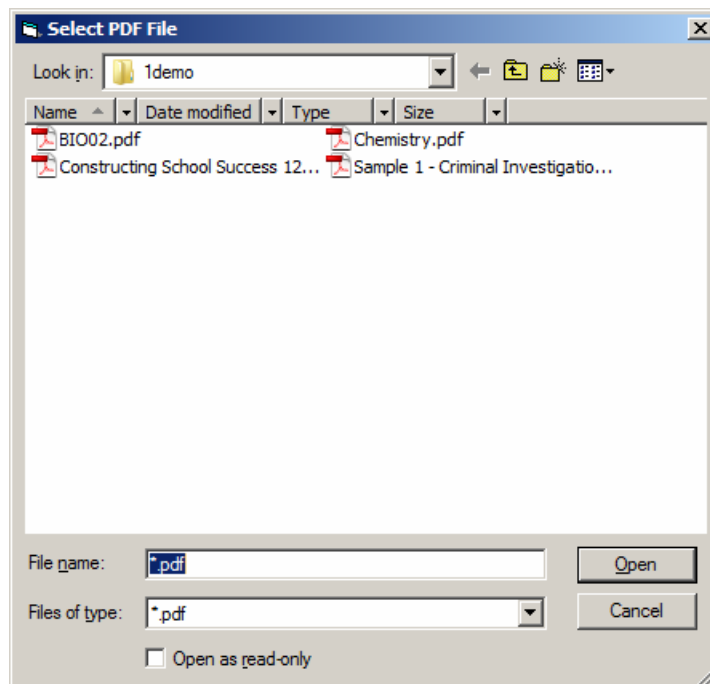
PDF Import Wizard

Scan and Read has a built-in PDF Import Wizard. This wizard will let you easily import a PDF file directly into scan and Read software so that its pages can be saved in text format that can be read by Scan and Read.. This feature will enable you to take books in PDF format such as those downloaded from Google Books and convert them to accessible text in just a few simple steps. Once you have a

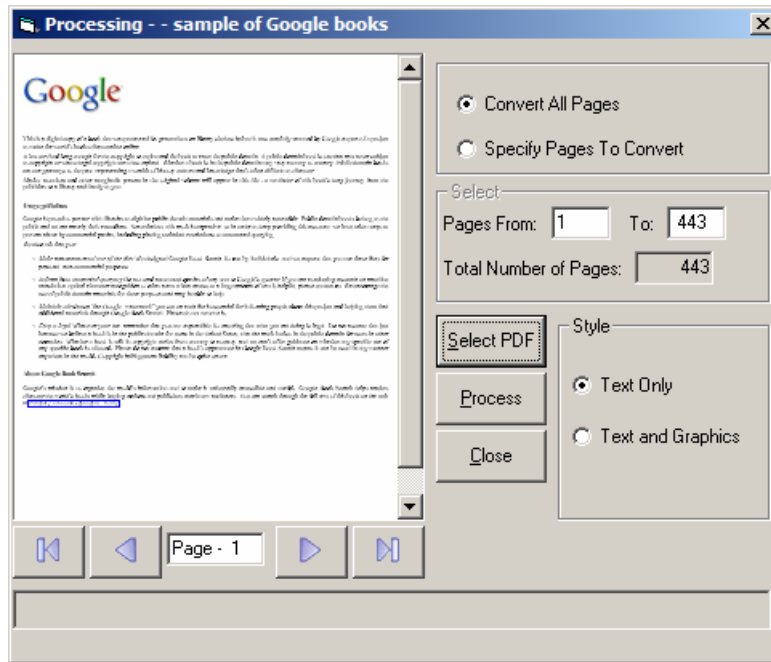
PDF file saved on your computer, select the “Import PDF” button  from the toolbar. This will open up the PDF Import Wizard.



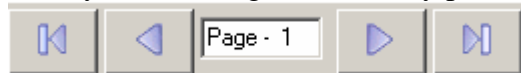
When the wizard opens, select the “Select PDF” button. This will open the “Select PDF File” window.



From this window, navigate to the directory where your PDF file is located. Select the file and then click the “Open” button. This will insert the PDF File into the preview area on the PDF Import Wizard.



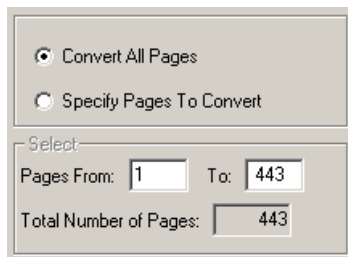
The wizard will display the PDF file, and you can navigate the file by pressing the



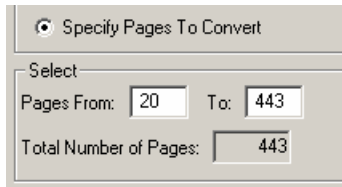
buttons just below the preview area

You can go to the next page, prior page, first page or last page just by clicking the appropriate button. The current page number is displayed between the prior page and next page buttons.

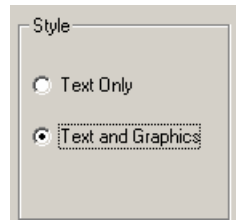
You can process the entire PDF File or just a range of pages if you only want to convert a portion of the book.



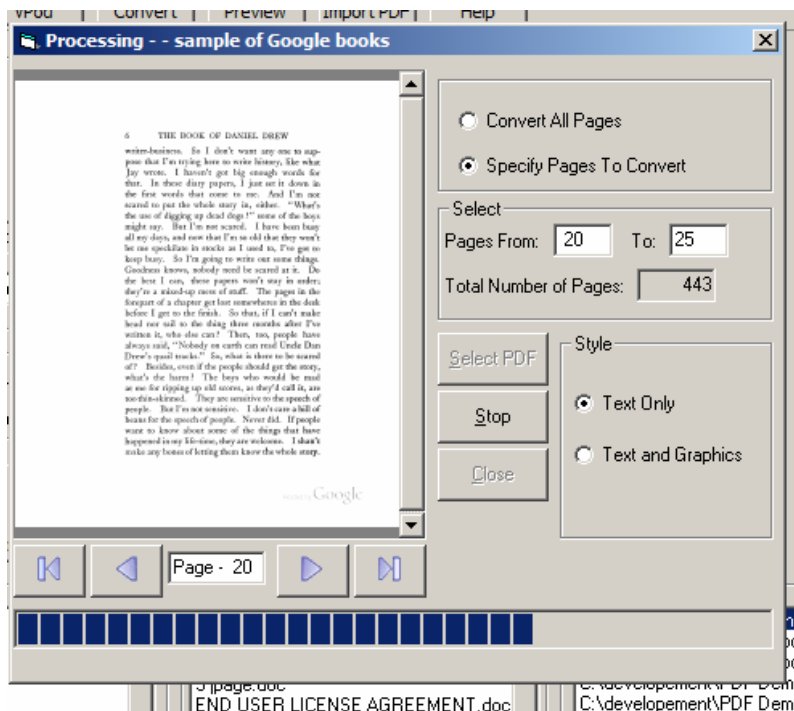
The default is to convert the entire book. To convert a portion of the book, select the “Specify Pages To Convert” option. Once this option is selected you will be able to specify which pages you want to convert.



You can also specify if you want text only, which works best for novels and documents that don't have many pictures. However, if you have pictures in your document, you can select the "Text and Graphics" option.



If you select the "Text and Graphics" option, the wizard will try to extract all of the images and put them in the correct place in the text. Once you have selected the pages you want to convert, just select the "Process" button.



You will see the pages change as it processes each one. The wizard process each page and put it into the reading area in Scan and Read Pro. It does not atomically save the file. If you wish to save the information you must select save within scan and read and give it a file name.

Reset OCR

If you ever try to scan and you get an error message saying that Scan and Read can't find a file go to the scan menu and select "Reset OCR" if you get a message saying the it was successful you will be all set, if you don't you will need to reinstall Scan and Read.

Reading a Document

All the commands your need for reading are found under the Reading menu. If you want to change a voice or set different colors, you will want to go to the Settings menu.

Read

To read a document, press the F6 Key. **When the reader starts, it will begin where the current cursor is located.** To make sure your cursor is at the beginning of the document, press CTRL+HOME, this will put you at the beginning of the document. The system will continue until it reaches the end of the document. To stop reading, press the F7 key. Press the F6 Key to resume where you left off.

There are many ways to control the reading. You can "right click" any where in the document and select Read, "right click" again for Stop, or you can click on the



Read



or Stop

icons in the tool bar. You can also use your arrow keys to help you read. If you use your Up or Down arrow key, it will read the line that you have just moved to. If you just use your Left or Right arrow, it will read the character that the cursor just passed over. Hold down the CTRL key while you press the Left or Right arrow key to read one word at a time.

Stop Reading



To stop the system from reading, press the F7 key or click on the stop icon in the tool bar . If you want to continue where you left off, press the F6 Key. Some times you will see the cursor jump ahead a few words when you hit stop. This is because we buffer the speech so that it does not sound like a bad cell phone connection.

Read Selected Text Only

Scan and Read has several other options for reading other than just read and stop. If you only want selected text to be read you can select the text you want to read then go to the read menu and select the option called “Read Selected Text Only” and Scan and Read will only read what you have selected.

Read line by line

Read line by line is an option that lets individuals read a line at a time by using the up and down arrows. Every time you use your down arrow it will read the line your cursor has just moved to. If you go to read menu and see a check in front of this option it is turned on and if there is no check the option is turned off.

Summarize

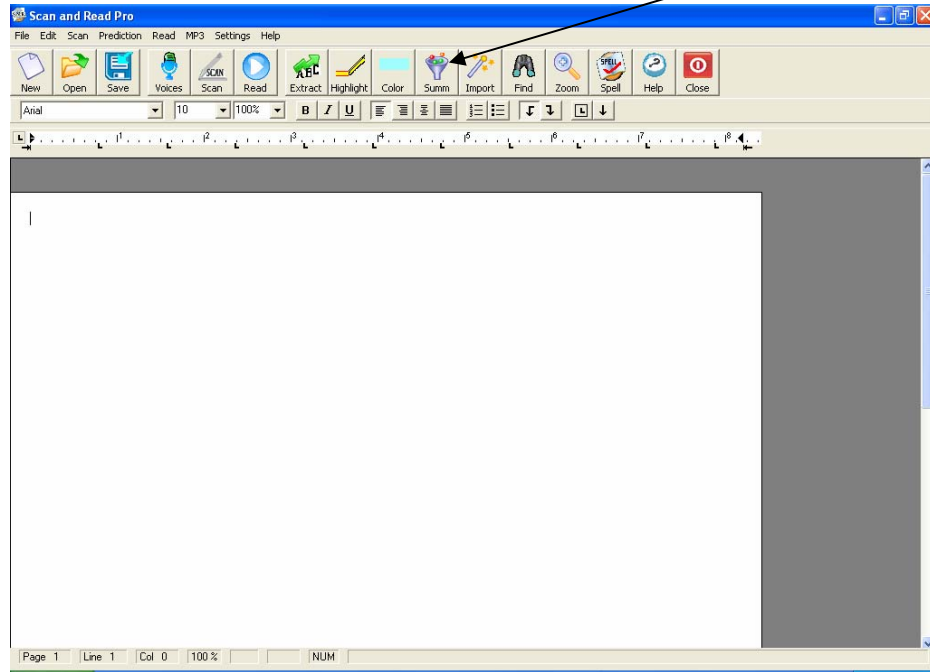
The built in summarization feature enables individuals to get more out of their reading by helping them identify the most important parts of the document they are reading. They can extract the summary into a separate document or have it highlighted in the original.

Creating a Summary of you document

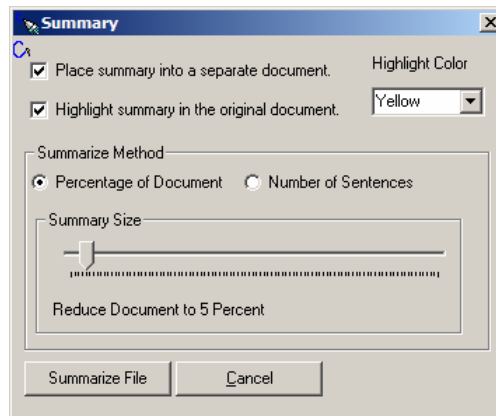
Scan and read has a built in document summarizer feature. This feature allows a reader to reduce the contents of the document to its basic essentials. A language modeling system is used to do the summary, giving it a higher degree of accuracy over the formula driven models used in the summary feature of Microsoft Word. Because Premier uses language, modeling the summary will even be effective on fiction that does not always have the formal paragraph structure used in non-fiction writings.

How to summarize a document

The summary feature is built into Scan and Read. Open Scan and Read and the either scan or open a document. Once the document is displayed, you will see the tool bar.



Look for the Summ icon on the Toolbar. You can select this icon for select Summarize from the read menu. This will open up the summarize window.



You have two choices of how you want the summary; you have one or the other or both. They are Place Summary into a separate document, and Highlight Summary in the original document.

Place Summary into a separate document.

When there is a check in the Place Summary into a separate document, a separate document is created and the resulting summary is placed in it. This summary can be saved or read independently of the original document.

Highlight Summary in the original document.

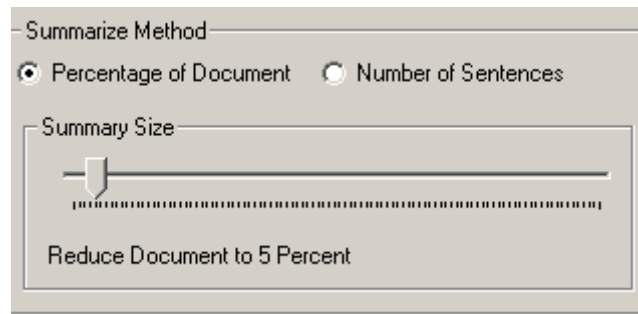
When the Highlight Summary in the original document has a check mark in it, the summary sentences will be highlighted in the original document. When the summary is done, you will be able to look at the original document and see exactly where the sentences that were pulled into the summary came from.

There are four choices of colors that can be used by the summary. These colors are Yellow, Blue, Pink and Green. These are the same colors used by the highlight and extraction feature built into the E-Text Reader. This gives you a big advantage over other summary tools because once the summary is done you can go through, and add things to the summary, just by selecting the text you want to add and then click on the high light color. To remove text from the summary select the highlighted text you want to remove and then select Clear Highlights from the Edit menu.

This is the first summary tool that allows you to quickly modify the summary. If you want, you can have the Summary Highlight in one color, and then switch colors for your highlight, that way you will be able to easily distinguish what was in the original and what was not. Once you are done highlighting and you would like to create a separate document that contains just the summary use the Extract feature on the Support Toolbar.

Adjusting the summary size

You can control the size of the summary. For some documents, you can create a summary that is only 10 percent of the original document and some you will need a larger summary. Adjusting the size of the summary will take a little practice to meet your needs. To help with this you have two options, you can restrict the summary to be a percentage of the original document, or it can be a specific number of sentences.



The default setting is a percentage of the document. To switch between percentages of the document to number of sentences just select the desired radio button. Once you have made your selection, you can adjust your summary size. You adjust the summary size simply by moving the slider to the left to make it smaller, and to the right to make it larger. Just below the slider, you will see the percentage or the number of sentences that will be included in the document.

When you have made the selections for your summary just select the Summarize button and it will start the summary. The summary process is pretty fast it can summarize about 10 pages a second, so a 100-page document will take about 10 seconds.

Key Echo

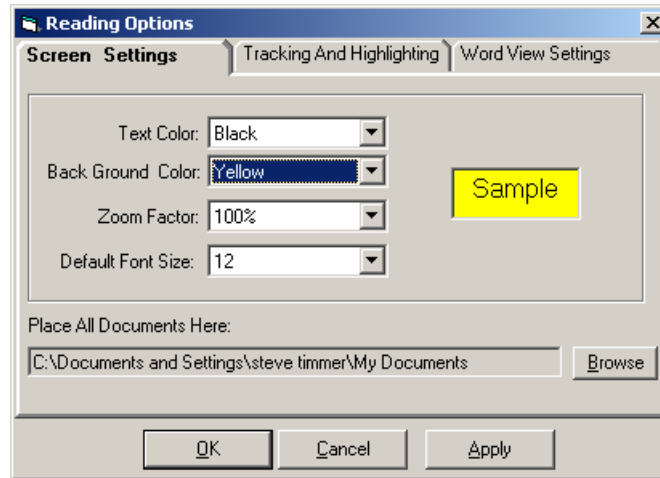
This feature allows users to hear the character that they just pressed. To toggle it ON or OFF, click on Key Echo menu item, or select it and press the Enter key. If it is ON then it will be turned OFF, and if it is OFF, it will be turned ON. This setting is saved.

Word Repeat

To use this feature select Word Repeat from the Read drop down menu. This feature when selected allows the user to hear the word they just typed. Example: type the word Monkey, then press the space bar. You will hear the word Monkey. To turn this feature OFF, deselect Word Repeat from the Read dropdown menu.

Reading Options

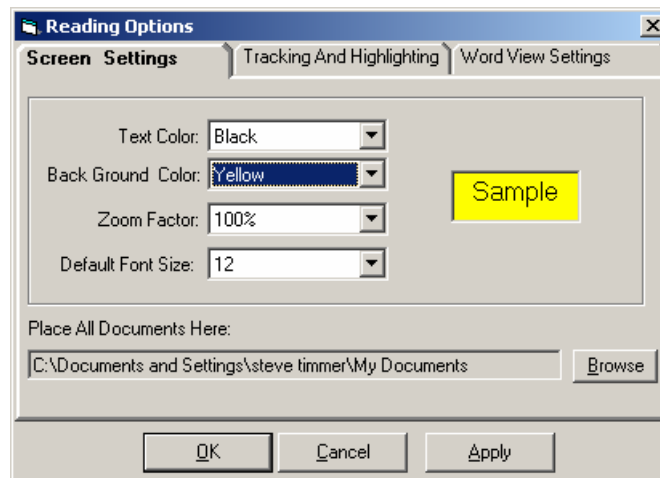
The READING OPTIONS menu item will open up a window that will allow you to make a whole host of changes to your reading environment. Select Reading Options from the Read Menu to open the options dialog box



There are three tabs on the window they are: Screen Settings, Tracking and Highlighting, Word View Settings.

Screen Settings

On the SCREEN SETTINGS tab, you can change the background color, foreground color, set the default zoom level and font size. You can also set the default folder where you would like all your documents to be saved.



Changing Screen Colors

You may prefer to change the foreground and background colors to make reading easier. You would do this from the Screen Settings tab. To change the colors of your screen, just select the desired color from the drop down list. To the right of the drop down list you will see the colors change as you make your selection. This will give you an idea of what your color choices look like. There are about 36 different color combinations.

Zoom Factor

You can set a default magnification level. This default level will be used whenever you start Scan and Read. Once it has been started, you can change it, but the next time you start Scan and Read, it will return back to the default.

Place all documents here.

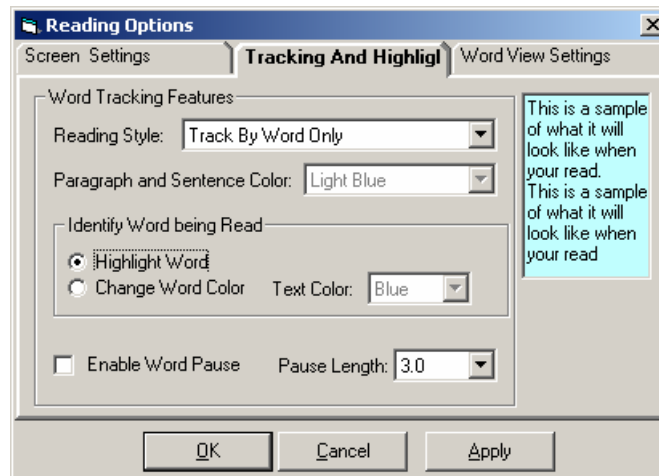
You can set the default location for opening and saving documents. If you set the location, every time you click on the SAVE or OPEN, it will look first in this folder location. To set the location, click on the BROWSE button. A directory list will open.



Select the drive and the folder you want to be your default location and then click OK. This will set your default path.

Tracking And Highlighting

Use the Tracking and Highlight table to set your reading preferences. These features are only noticeable while the Scan and Read is reading to you.



Highlighting

Scan and Read now supports multiple forms of highlighting. You can have Scan and Read highlight by “word only”, “word and sentence” and by “word and paragraph”. The highlight colors are selectable to meet your visual preference.

Highlight By Word

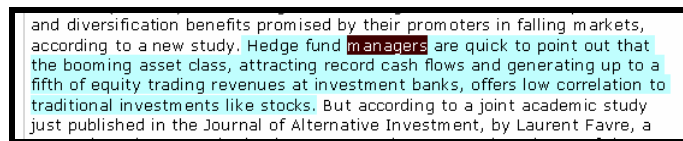
“Highlight by Word” only highlights each individual word that is being read. It will follow along as the document is being read.



To select Highlight by Word, go to the Read menu and select the menu item “Highlight” and then select the sub-menu item Highlight by Word and press the Enter key. If there is a check mark in front of it, that means this feature is turned ON.

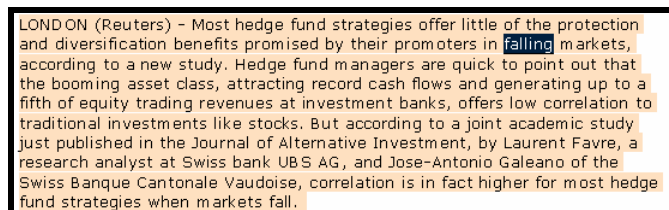
Highlight by Sentence and Word

Select this option if you want to have the current sentence highlighted as it reads to you. It highlights both the current sentence as well as the word that is being read in that sentence. The Sentence is highlighted in one color and the current word is in a contrasting color. The highlight colors can be selected. “See Changing the Highlight Color” later in this section.



Highlight by Paragraph And Word.

If you want to have the current paragraph highlighted with a contrasting color of the current word being read, make sure that there is a check mark in front of the Highlight by Paragraph and Word Menu option. You will find the highlight options on the Read menu. The colors of the highlight are selectable.



Identifying Word Being Read

Scan and Read gives you two methods of identifying the word being read. You can have the word “highlighted” or you can have the “color of the word change”. The default is highlight.

Change Word Color

If you would prefer to have the word change color as it is being read versus having it being highlighted as it is being read, make sure the Change Word Color option is selected. If you do select this option make sure that you select a change color. If you select black and your text is already black you will not be able to see the word color change. If you select the same color as the background, the word will disappear as it is being read.

Word Pause

This feature allows users to slow down the reading of the word without distorting the word being spoken. You can increase the time between each word. This will allow individuals time to comprehend the word before going on to the next word. It is a great feature for persons learning to read or studying a new language. To use this feature, place a check in the “Enable Word Pause” check Box.

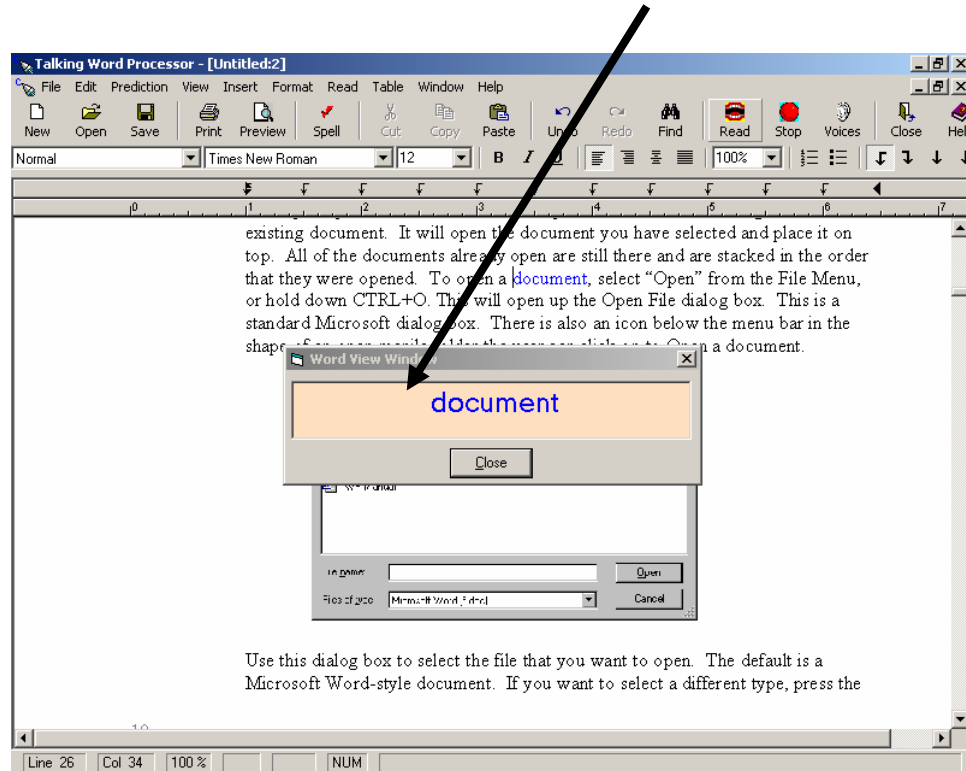
Word Pause Setup

If you have enabled Word Pause, you will also want to select a word pause length. This is the length of time between spoken words. The time can be adjusted from 0.25 to 3 seconds.

Word View Tab

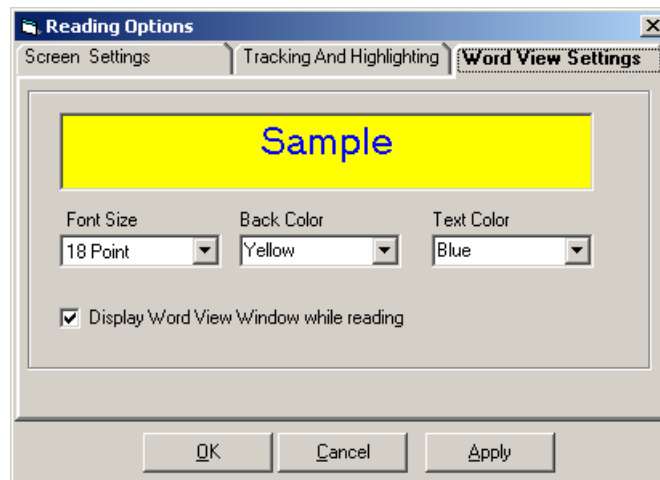
First of all, what is “word view”? “Word view” is a visible window that remains stationary on your computer screen while the document is being read. Some people have trouble following a moving cursor or rolling text, so we made a stationary window that allows the user to focus on a single place on the screen for reading. The word view window will display EACH word that is being read. It is always displayed in the same spot, so

you do not need to move your eyes. It also gives you the ability to change the font size, background color and text foreground color independent of the document being read.



Word View Settings

To change the settings of the Word View window, go to the Read menu and select Reading Options, and then select the Word View tab. From this window, you can adjust the font size. You can select from 8 to 24 point font. When you select a font size, you will see the sample text change to reflect the new setting. You can also change the Background Color and the Text Color. You do not need to “save” the changes. All you have to do is select the Close button and the options that you have selected will automatically be save for the next time you read.



Show Word View

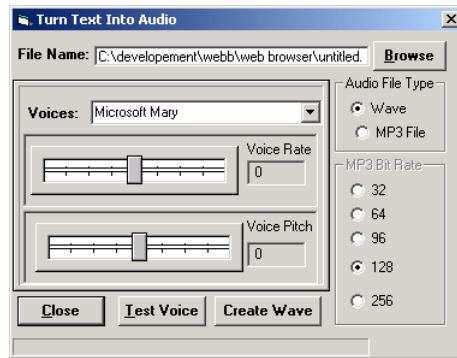
Place a check in the Display View checkbox. This will display the Word View Window while Scan and Read is reading. Remove the check if you want to turn off the Word View settings.

Create Audio Window

Scan and Read can turn your current document into an audio file. Scan and Read can make both MP3 files and Wav files. It is a great way to take a document way from your computer. For example, turn a chapter of a book into and audio file put it on CD and listen to it in your car or on your portable CD player.

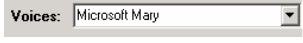
MP3 Create

To create an audio file, go to the MP3 menu and select MP3 Create. It says “MP3 Create”, but you can create more than just MP3’s. Before you can make an audio file, you need to have text loaded into Scan and Read. You can do this by scanning a document, opening up an existing document or pasting it in from another document.

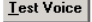


After the window opens, make the necessary adjustments and then click on the Create Button.

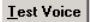
Selecting a voice

Scan and Read will work with many different voices. However, to create audio files, you can only use “SAPI 5 compliant” voices. Scan and Read provides you with 3 voices from Microsoft: Microsoft Mike, Mary and Sam, and 2 AT&T Natural voices Mike and Crystal. You may have others listed as well. If you select one that asks for a password, you will not be able to use it. They were installed with a program, which only has the right to use it. Click on the down arrow next to the voices list box  and select a voice from the list.

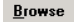
Rate

You can adjust the speaking rate by moving the slider bar left or right. (Left is slower, right is faster). To hear your changes, click on the Test Voice button .

Pitch

You can adjust the voice pitch by moving the pitch slider bar left or right. (Left makes the pitch goes higher; right makes the pitch go lower. To hear your changes, click on the Test Voice button .

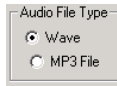
File Name

You can type in a file name or select the Browse button . If you click on the browse button, you can select where you want the file to be saved and provide it with a name. The file type selected will determine what extension it will be

given. For more information about the different file types, see File Type this section.

File Type

Scan and Read can make two different types of Audio files.




They are Wave and MP3.

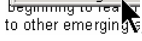
Wave is a standard audio file and can be put on a CD and played with a standard CD Player. MP3 is a format that can be played on any MP3 player. The MP3 format generally produces a smaller audio file than a Wave. The smaller the “Bit rates”, the smaller the resulting files. For more information about “bit rates”, see MP3 Options.

MP3 Options

There are seven different bit rate settings for MP3 files. The default is 128. What is a bit rate? It is the number of times an audio signal is sampled per second. The bit rate is measured in thousands. So a bit rate of 128 means that the audio signal is sampled 128,000 times per second. The less it samples the smaller the audio file. 128 are good for music, but for audio that is just “reading text”, you can probably use 64 bits and not notice any difference in quality. The bit rate options are only enabled if the Audio File type selected is MP3.

Creating a File

Once you have made all the desired adjustments, you can create the audio file by clicking on the  create wave button. If the audio file type “MP3” is selected, this button will say Create MP3. When the file is done, it will tell you

“reading is done” in the lower left hand corner of this screen . If you are creating an MP3 file, there is one more process that will occur: the MP3 compressor. This process takes the freshly created file and turns it into an MP3 file.

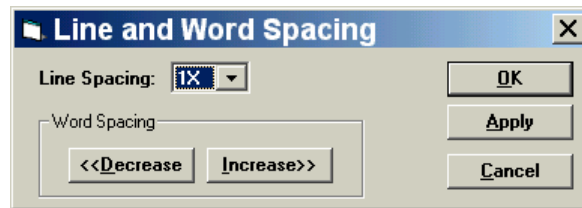
What size audio file will it create? If you use the default settings, you will get about a 1 minute audio for every 1,000 characters and a minute of audio takes about 1 megabyte (MB) of disk space. This is just a rough guideline and it may vary depending on your settings.

Settings Menu

The settings menu is where you fine tune Scan and Read to meet your needs. All the adjustments that you make here are saved, so the next time you open Scan and Read, you will not have to make the changes again.

Line Spacing

Line Spacing is a feature that allows users to increase/decrease the space between each typed line of text. To increase the space between lines, go to the Settings Menu and select Spacing from the menu. A dialog box will be displayed with a drop down box allowing you to select the space between lines of up to 5X the original layout. To change, select the size and then click Apply. If you like the change, select OK. If you do not like the change, make another selection until you find the setting that you want. To go back to your original setting, select 1X. Then press the OK button.



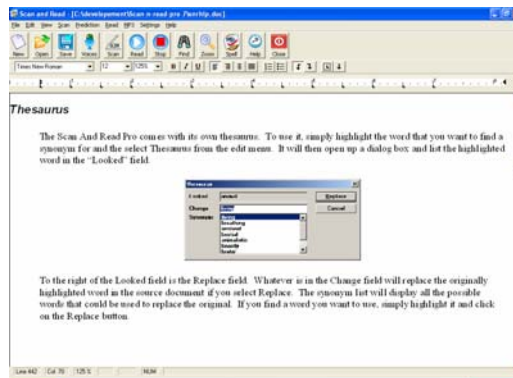
Word Spacing

Word Spacing is a feature that allows users to increase/decrease the amount of space between each word. To increase the space between words, go to the Settings Menu and select Spacing from the menu. A dialog box will be displayed with two buttons for Word Spacing. One for Decrease and one for Increase. To do either, select the appropriate button. The program will scroll through the document quickly and make the necessary changes. If you like the change, select OK. If you do not like the change, make another selection until you find the setting that you want. Then press the OK button.

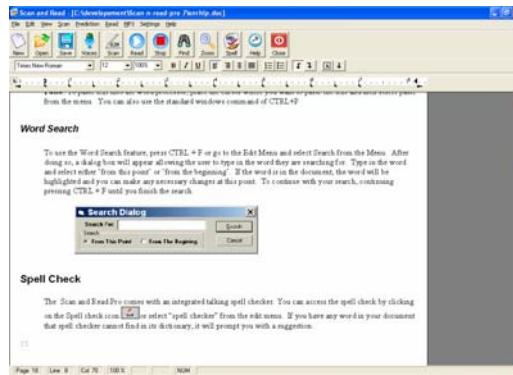
Page Display

There are two ways to display the information in Scan and Read and they are Normal view and Page view. In Normal view, the edit area fills the entire width of the screen, and in Page view, it displays the boundary of the pages.

Normal View

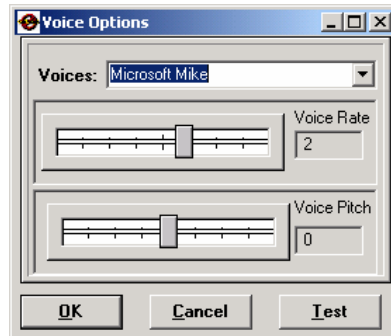


Page View



Voices

The system comes with 21 standard voices. You can change the voices at any time by pressing the F12 key, or you can press ALT+T to bring up the Settings menu. You can then select Voices from the menu (see below).



You can scroll through the list of voices until you find the one you want. As you select a voice, the voice will be read to you so you can hear what the voice sounds like.

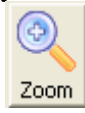
Once you have selected the desired voice, you can adjust the rate by moving the first slide bar to the right for faster and left for slower. Simply click on the slide bar to make an adjustment. (You can also use your LEFT ARROW or RIGHT ARROW keys to adjust the slide). Select the RESET to set everything back to the default settings. Both the Rate and Pitch can be adjusted from a -10 to 10, with 0 being the default, some voices have a range of 0 to 350 with 180 being the center. You only have to set the voice when you want to change. The system remembers your last setting each time you start the system. Once you find a voice setting that you are comfortable with, you will rarely need to change it again.

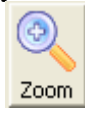
You adjust the Pitch just like changing the voice rate. Moving the slider to the left will decrease the pitch, sliding it to the right increases the pitch (you can also use your LEFT ARROW or RIGHT ARROW keys to adjust the slide). As both the Rate and Pitch are being adjusted, you will hear what the new settings sound like.

Select the OK button to close the window and save the changes. Selecting the Cancel button will close the window without saving any of the changes.

Zoom

The system is equipped with a Zoom feature. The Zoom feature allows users to Zoom from 25% to 400% of the current font. The reader will work at any magnification level. The default setting is 100%. To Zoom in or out you must select the Settings menu by pressing ALT+T. Then select Zoom from the menu. This will open up the Zoom sub menu. This menu lists all of the available percentages. Select the one you want and it will change immediately. Or you can



just Click on the Zoom Icon . If you continue to click on the icon, it will continue to zoom in until you reach the maximum. Once you have reached the maximum and you click it again it will go to its smallest setting, allowing you to continue to zoom out. You can also do this by pressing the ESC key. checked.

Reset Defaults

If you want to reset the system back to the original settings, use this option. To set the entire Scan and Read application back to the way it was when it was installed, press Alt + T to go to the Settings Menu and then select the Reset Default option. This will reset everything except the voice. It will reset the voice rate and pitch, but not the voice.

Default Voice

The default voice setting will load the default voice. It will not change the rate settings nor will it change the voice pitch. To reset the system back to the default voice, press Alt + T to go to the Settings Menu and then select the Default Voice option.

Help

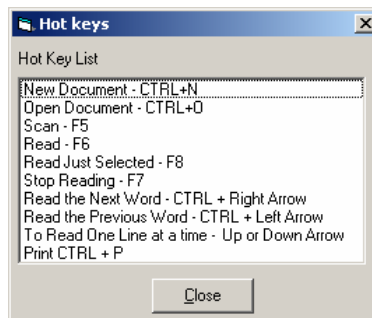
The Help option provides two ways of getting information. One being the traditional help files. You can get to it by pressing F1. If you want to see the user manual, go to Load User Manual option under this menu. It loads the manual directly into Scan and Read. You can then have Scan and Read read the entire manual to you.

Load User Manual

The user manual is build right into Scan and Read. We do this for two reasons. First, you will never have to worry about losing your manual, and second, since Scan and Read is a reading tool, we set it up so that Scan and Read can read the manual to you.

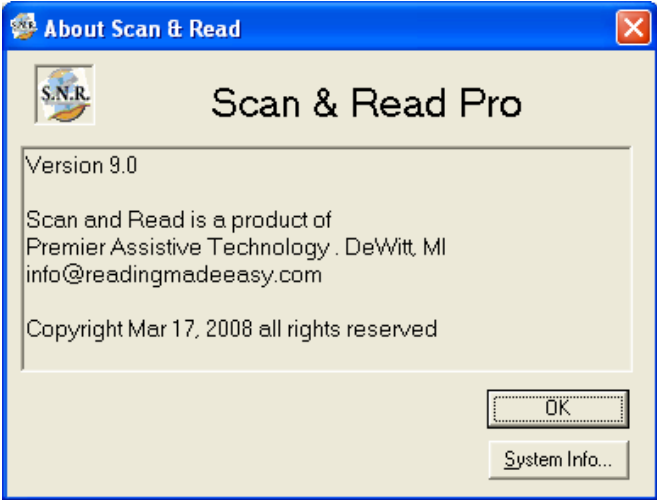
Hot Key List

For a quick glance of all the hot keys, go to the help menu and select the option "hot key list". The hot key list will open. Use your up and down arrow to hear each item in the list.



Help About

The Help About box is a small window that tells you what version number you have and contact information. To open the Help About window, press ALT+H to open the Help menu and then select Help About. To exit this window, press the Enter key.

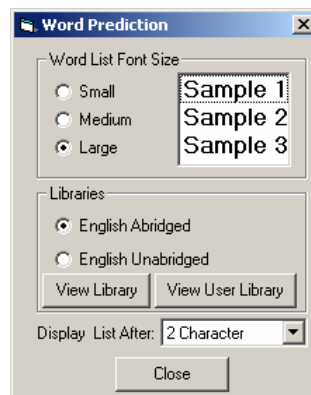


Word Prediction

Configuring your word prediction

The Predictor Pro word prediction can be easily configured to best suit your needs. You can change the font size of the prediction list, edit the word list and even set the minimum number of characters you want to enter before it displays the prediction list

Select the options menu item from the Prediction Menu. This will open up the Prediction settings window.



Word List font size

You have the choice of 3 different font sizes for your prediction list. Small which is the default is 10-point font, medium is 12-point font and large is 14 point. Just select the size you want.

Libraries

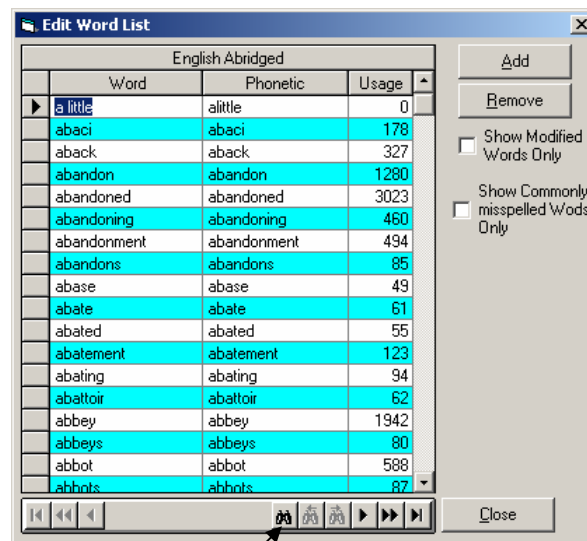
The new Predictor Pro comes standard with two libraries. An Unabridged and an Abridged. The for the most part, both libraries contain the same information, with the exception being that most offensive, vulgar and obscene language has been removed from the abridged dictionary.

You are not limited to what we provide in the libraries. You can edit it, add your own words and even delete words you do not want. To view the words in the library, select the library you want and then select the View Library button.

Modifying the Libraries

Select the View Library button from the Prediction Options window to edit the word libraries. This will open up the Edit Word list window. When it opens, all the words will be displayed in alphabetical order. The abridged and unabridged dictionaries contain 80,000 of the most commonly used words. In addition to commonly used words, it also includes over 1,100 commonly misspelled words and phonetically spelled words.

Remember the old grammar rule “i” before “e” except after “c”. Unfortunately, that is only good most of the time. For example, the word “weird”. Word prediction will pick up these misspellings and provide the user with the correct word. The same thing will happen if you phonetically spell “phone” with an “f”....”fone”. Word prediction will detect that as well and offer the correct spelling.



Click To Search
for a Word

In the library table view, you will also see a Usage column. The Usage column is how often the word is used in the English language. The larger the usage number, the higher on the prediction list it will appear.

Users can add their own words and even abbreviations to the prediction list. For example, the name of your organization may be quite large “Traverse City

Intermediate School District”. You can enter short hand TCISD and every time you type those five letters you could replace it with “Traverse City Intermediate School District”, thereby, saving you a significant amount of typing. For more information on adding a word, see “Adding Words to the Library” section later in this section.

Show Modified Words Only

There is a checkbox called “Show Modified Words only”. When this is checked, it will only show the words that the users has added or modified. It gives you a quick way to review all your custom words.

Commonly Misspelled words.

In addition to the regular library of correctly spelled words, we also provide you with a list of commonly misspelled words. To see this list, just check the check box. If you have words that you often misspelled, you can add them as well. In that manner, when you misspell those words, you will be prompted with the correct spelling.

Display List After

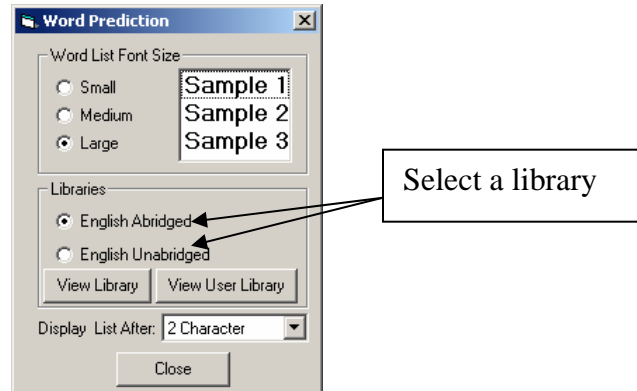
Word prediction will provide users with a floating word list. As they type, the list floats along displaying the predicted words. The more characters you type, the more accurate the predicted words will be. It is rare that the prediction can predict the word you are looking for with just one character. So that is why we give you the option of displaying the word after you have typed a set number of characters. The default is 2 characters, but you can make it any value you choose.

Saving Your Word Prediction Settings

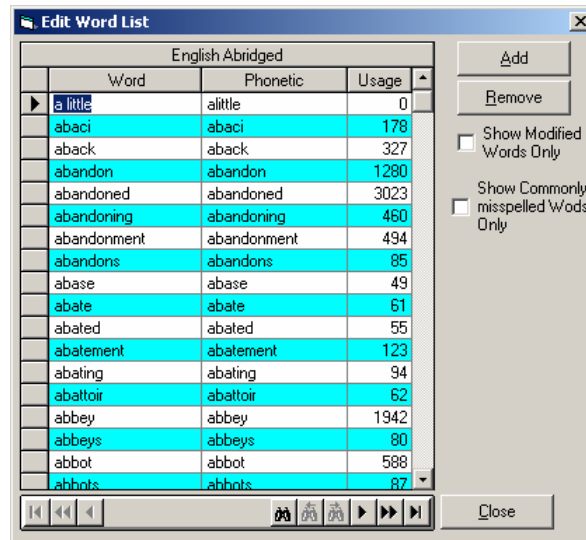
When you are done making your adjustments, just select the OK button. The options that you have selected will automatically be saved. When you open up the word prediction options window, it will display your current configuration. When you close the window, the changes you have made will now become the default configuration.

Adding a word to the library.

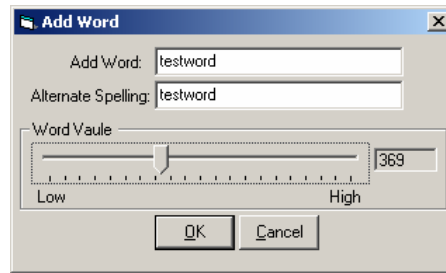
To add a word to a library, you need to have the dictionary open. You do this by selecting the Options menu item from the prediction menu in Scan And Read Pro. Once the options menu is open, select one of the libraries.



And then select the View Library button. This will open the Edit word list window.



To add a word, just select the Add Button. When you select the Add button, the Add Word window will open.



When adding a word you, have two places to type in the word. You have the Add Word edit field. You enter the correct spelling of the word. This is the word that will be displayed in the prediction list. The second field is the Alternative Spelling. This field allows you to enter in an alternative spelling for the correctly spelled word. For example, if you constantly misspelled the word “tomorrow” as “tomorow” you can enter your alternative spelling and then every time you misspelled, it would prompt you with the correct spelling of the word.

The alternative spelling can be used for many different things. You can use as short hand or the phonetic spelling of a word. For the word “phone” you could enter in the alternative spelling “fone” and that way any time someone spelled the word phonetically, the correct word would appear in the list.

Word Usage. Not all words are created equal. Some words are used more frequently than others. For example, the word “antelope” is not used as often as the word “anticipate”. Therefore, if you typed in the letters and you would want “anticipate” to be higher on the list than “antelope”. You can provide a usage value to any word you add to a list.



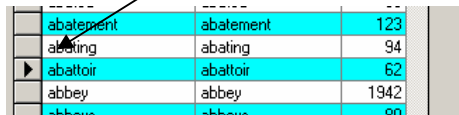
Just move the slider bar from the left to the right. The default is zero. The higher the value you give a word, the higher it will be displayed on the prediction list. Higher value words appear higher on the list than words that have a lower value, but similar spelling.

You can use this feature to adjust words already in the library. If you don't want a word to appear on a list you can completely remove the word from the library, or you can give it a usage value so low that it will only display when all other options have been exhausted.

When you are done adding a word, just select the OK button.

Removing a word from a Library.

To remove a word from a library, you need to first have the library open. Once the library is open, you will then need to find and select the word you want to remove. You can tell what word you are on by the arrow next to the word.



	abatement	abatement	123
	abating	abating	94
▶	abattoir	abattoir	62
	abbey	abbey	1942
	abbey	abbey	90

To remove the word, just select the Remove Button. **Caution: This is permanent.** Once you have removed a word, it is gone forever. The only way you can get it back is to add it back in.

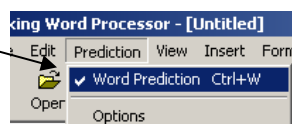
Using Word prediction

You can use word prediction without having to make any changes to the configuration. Just turn it on and start typing. If you would like to change the prediction settings, go to the Prediction menu and select the Options item.

Turning Word Prediction on or off.

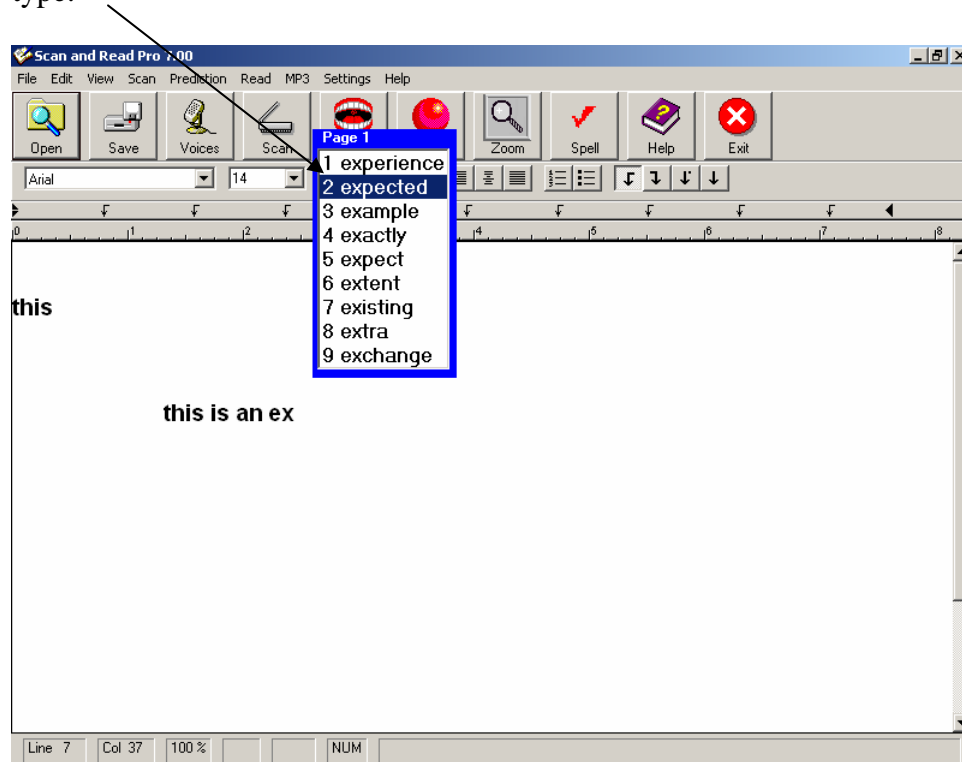
By default Word Prediction is OFF and you need to turn it ON before you start using it. Once it is turned ON, it will remain ON until it is turned OFF again. If you have word prediction turned ON, when you exit Scan and Read Pro it will be ON next time you use Scan and Read Pro.

To turn ON Word Prediction, go to the Prediction menu in Scan and Read Pro and select the Word Prediction Menu option. You can also press CTRL + W to toggle it ON or OFF. If there is a check mark in front of the menu option, then word prediction is turned ON.



How do I use word prediction

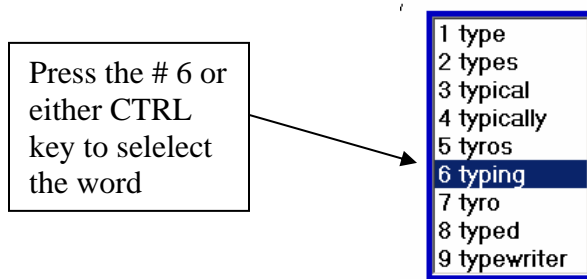
Once you have word prediction turned on, all you have to do is start typing! As you type, the floating prediction list will appear and follow your cursor as you type.



When the word list is visible, to hear the words in the list, just use your UP and DOWN arrow keys to go through the list. .

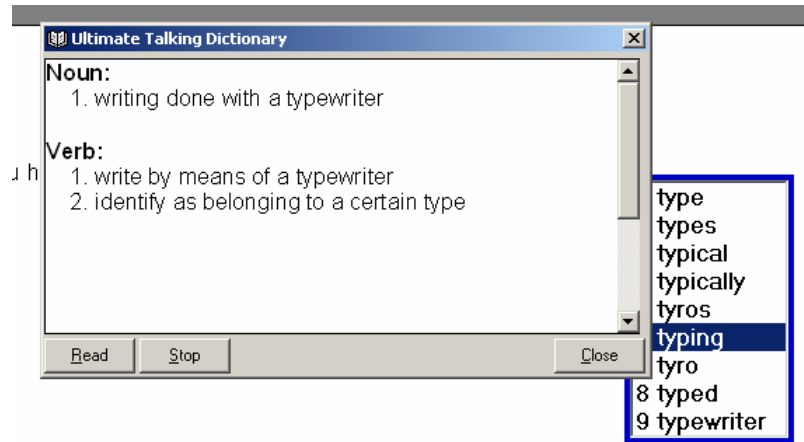
Selecting a Word from the word list

Use your UP and DOWN arrow keys to go up and down the list. As each word is highlighted, it will be read to you. There are three ways to select the word to insert into your active document as you are typing. (1) You can simply double click the word with your mouse, (2) Press either CTRL key on your keyboard or (3) press the corresponding number in front of the word you want. In the following example, you would press the number 6 to select the word “typing”. The numeric keypad will not work for selecting these words. You must use the number keys above the letters on your keyboard.



How to get the right word every time

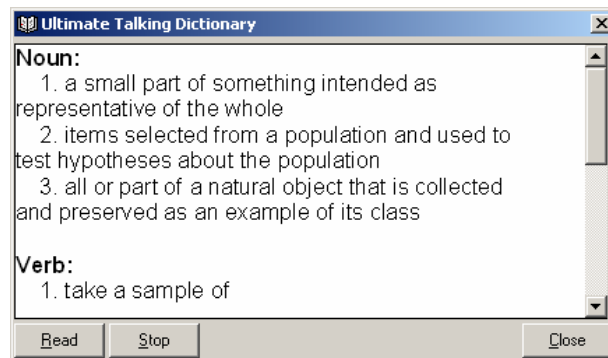
Word prediction is great, but how does one know if they have selected the right word? It is easy Scan and Read Pro. If you would like to find a definition of a word in the prediction word list, just select the word with your mouse and then click the right mouse button (once). When you do that, the definition window will open.



When the definition appears, just click on the read button to hear it. Or use your up and down arrows to read a line at a time. When your are done, just press the ESC key or click CLOSE.

Find the definition of a word any time just by double clicking the word.

If you would like to find a definition of a word, you can at any time just by double clicking the word in Scan and Read Pro. When you double click a word, the Definition window will open and then all you need to do is click on the READ button to hear the definition. When you are done, click the CLOSE button or press the ESC key.



Appendix A System Requirements

System Requirements

CPU:	900 MHz Pentium or Faster
Memory:	256 MB
Disk space:	400 MB
CD ROM:	4X or Faster
Keyboard:	104-key Standard Keyboard
Mouse:	Standard Mouse
Speakers:	Standard Speakers
Sound Card:	Any Windows Compatible Sound card
Scanner:	Any TWAIN compliant, USB compatible scanner

•

C

Cancel, 16
Change, 16
Change Word Color, 34
Changing Screen Colors, 31
Copyright, 2
Create Audio Window, 36
Creating a File, 38

D

Default Voice, 42

E

Edit, 13
Exit, 13

F

File Menu, 11
File Name, 37
File Type, 38
Find the definition of a word, 55

H

Help, 43
Help About, 43
Highlight by Paragraph And Word., 33
Highlight by Sentence and Word, 33
Highlight By Word, 33
Highlighting, 32
How does it Work?, 7

I

Ignore, 16
Ignore All:, 16
Installing, 9

K

Key Echo, 30

L

Libraries, 45
Line Spacing, 39

M

MP3 Create, 36
MP3 Options, 38

N

New Document, 11
Normal, 40

O

Opening a Document, 11

P

Page, 40
Page Display, 40
PDF Import Wizard, 22
Pitch, 37
Place all documents here., 31
Printing, 12

R

Rate, 37
Read, 26
Read line by line, 26
Read Selected Text Only, 26
Reading a Document, 25
Reading Options, 30
Replace, 16
Reset Defaults, 42
Reset OCR, 25

S

Saving a Document, 12
Scan and Read Professional, 7
Scanner Options, 19
Scanning, 17, 20
Screen Settings, 31
Selecting a voice, 37
Selecting a Word from the word list, 54
Settings Menu, 39
Short Cut Key, 10
Show Word View, 36
Spell Check, 15
Stop Reading, 26
Summarize, 27
System, 56
System Requirements, 9, 56

T

Thesaurus, 16
Tracking And Highlighting, 32

V

Voice, 41

W

Word In Question, 16
Word Pause, 34
Word Pause Setup, 34
word prediction, 53
Word Prediction, 45
Word Repeat, 30
Word Search, 14
Word Spacing, 39
Word View Settings, 35
Word View Tab, 34

Z

Zoom, 42
Zoom Factor, 31