

# Quick Reference Guide

## How can I tell if my computer is running a 32-bit or a 64-bit version of Windows?

To find out if your computer is running 32-bit or 64-bit Windows, do the following:

1. **Click the Start button**
2. **Click Control Panel**
3. **Click System and Maintenance**
4. **Then Click System.**

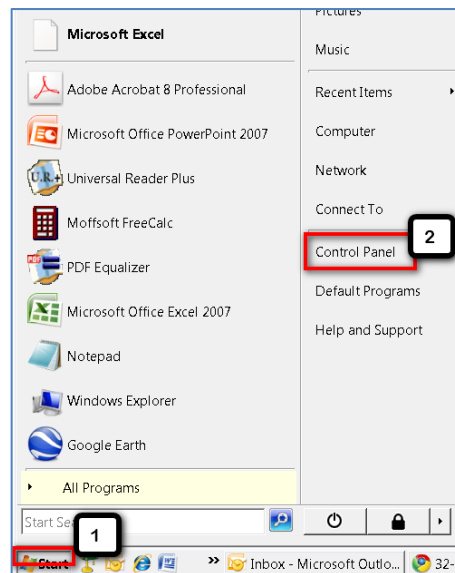
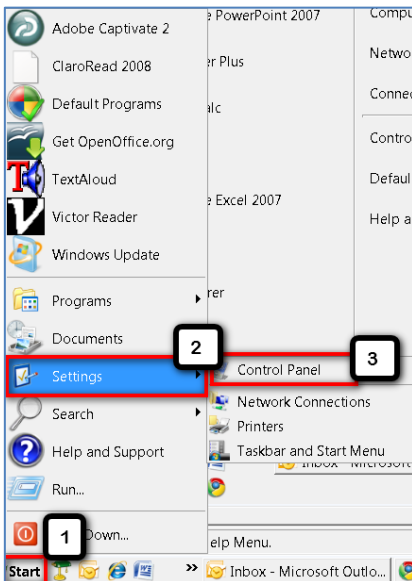
Under **System**, you can view the 'System Type'.

### For Windows VISTA:

1. **Click the Start button**
2. **Click Control Panel**



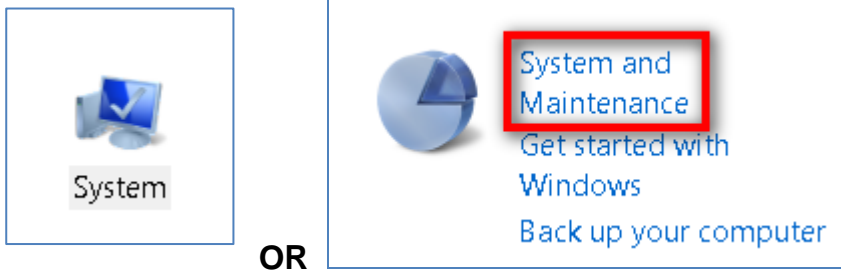
OR



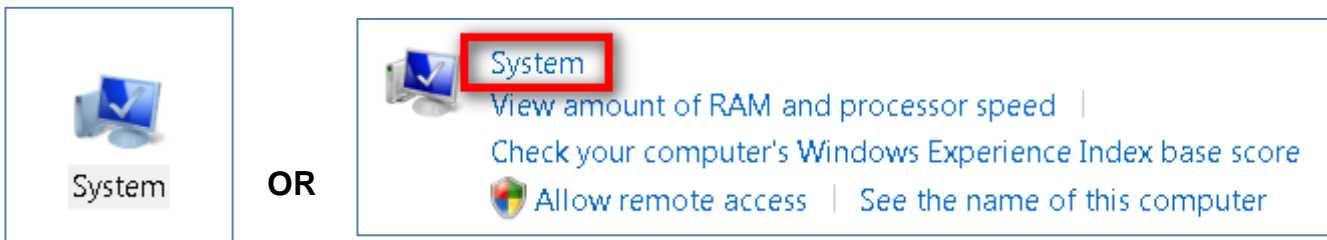
# Quick Reference Guide

## How can I tell if my computer is running a 32-bit or a 64-bit version of Windows?

### 3. Click System and Maintenance



### 4. Then Click System.



Under System, you can view the 'System Type'.

